

# SPECIAL PICKUP

## HEAVY LOADS



CALL US IF YOU NEED PICKUP OUTSIDE YOUR REGULAR COLLECTION DAYS

### what is a special collection

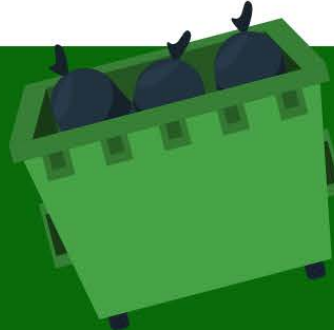
A special collection:

1. Falls outside your normal collection days
2. Is larger than the bed of a pickup truck or 64 CY

If your heavy load falls under one or both of these situations, you will receive a door hanger that explains the cost and the reasons we need to schedule a special collection.

Remodeling and/or construction materials can be placed for collection only if you call Public Works and arrange for a special pickup charge of **\$30.00 per CY fee, with a \$30.00 minimum.**

The charge can be added to your active water account.



### Large load? Use an affordable city dumpster for a clean worksite

If you know in advance that your special and/or oversized load will be 20 cubic yards or more, then contact the Public Works Department to find out what is needed to set a dumpster and sign a *Dumpster Agreement*.



### appliance pickup

Residential special pickup fee for appliances can be arranged for \$40.00 per item

#### Call us to:

- arrange for a pick up
- receive authorization for an oversized load collection
- any questions



(979) 415-2430