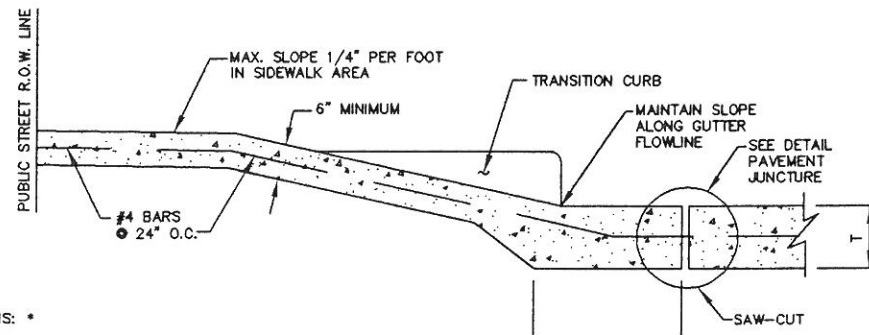


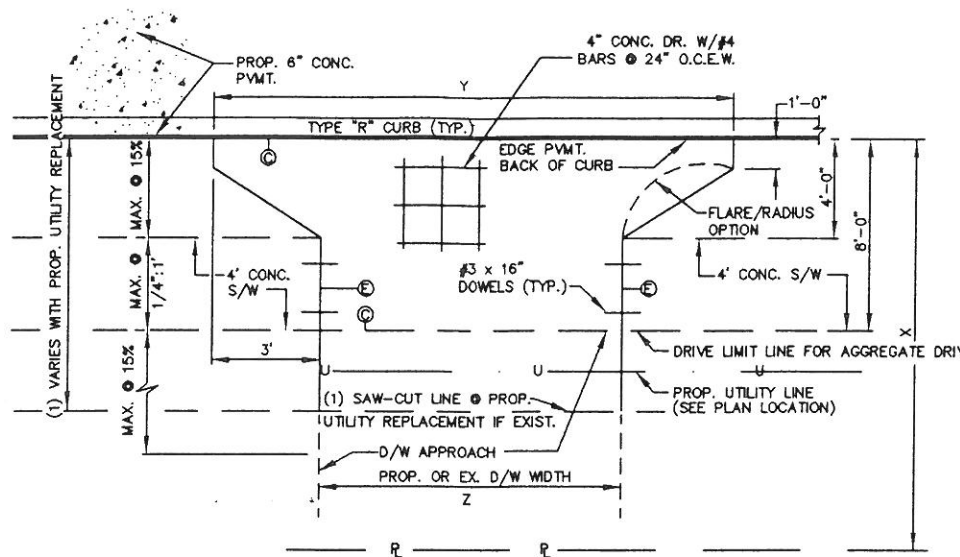
PLAN



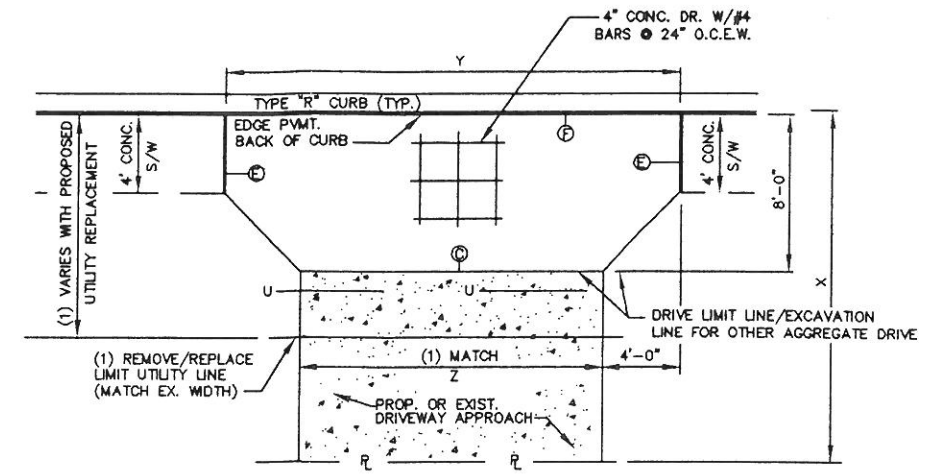
SEC. A-A

- MINIMUMS: *
- 25' R COMMERCIAL OR MULTI-FAMILY DRIVE ON MAJOR THOROUGHFARE.
 - 10' R COMMERCIAL OR MULTI-FAMILY DRIVE ON COLLECTOR OR LOCAL STREET.

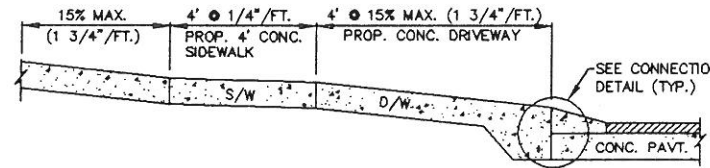
REPLACE CONC. PAVEMENT TO FULL THICKNESS, T



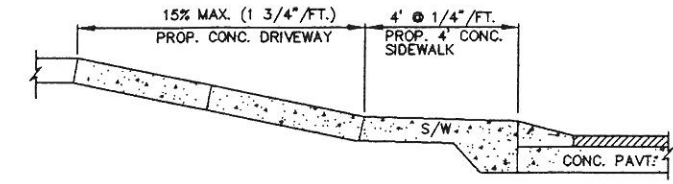
TYPICAL PROPOSED DRIVE CURB OFFSET SIDEWALK CONDITION



TYPICAL PROPOSED DRIVE BACK OF CURB SIDEWALK CONDITION



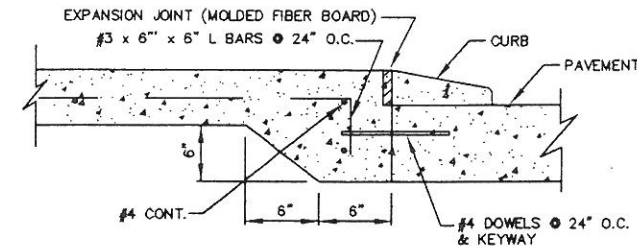
SECTION @ OFFSET SIDEWALK CONDITION



SECTION @ BACK OF CURB SIDEWALK CONDITION

NOTES:

- ⊙ CONSTRUCTION JOINT
 - ⊕ REDWOOD EXPANSION JOINT
 - ⊖ PREMOLD EXPANSION JOINT
1. REFERENCE TO "X", "Y" & "Z" SHALL REFER TO SPECIFIC DIMENSIONS IN CONSTRUCTION PLANS OR BUILDING DRAWINGS AND/OR SCHEDULES.
 2. (1) (FOR RECONSTRUCTION ONLY) PLAN QUANTITY FOR SURFACE REMOVAL & DRIVEWAY REPLACEMENT SHALL BE USED AS MINIMUM AMOUNT FOR PAY PURPOSES. THE CONTRACTOR MAY AT HIS OPTION AND COST REMOVE TO LINES BEYOND PAY LIMIT LINE FOR HIS CONVENIENCE.



CONNECTION DETAIL

COMMERCIAL / INSTITUTIONAL / APARTMENT DRIVEWAY & CONNECTION DETAIL

N.T.S.

RESIDENTIAL DRIVEWAY & CONNECTION DETAIL NEW & RECONSTRUCTION

N.T.S.

PAVEMENT CONSTRUCTION

DRAWING DETAIL

LJP-5



DEPARTMENT OF ENGINEERING AND PUBLIC WORKS

SEAL



DESIGN ENGINEER: _____ DATE: _____

SUBMITTED: _____
SCALE: _____ SHEET 5 OF 9
DATE: _____